

1910

Winter

Alfred Bryan

Albert Gumble

Follow this and additional works at: <http://digitalcommons.ithaca.edu/sheetmusic>



Part of the [Music Commons](#)

Recommended Citation

Bryan, Alfred and Gumble, Albert, "Winter" (1910). *Sheet Music Collection*. 61.
<http://digitalcommons.ithaca.edu/sheetmusic/61>

This Book is brought to you for free and open access by the Library at Digital Commons @ IC. It has been accepted for inclusion in Sheet Music Collection by an authorized administrator of Digital Commons @ IC.

W I N T E R

In Eb, (*d to eb*)



Words by
ALFRED BRYAN



Music by
ALBERT GUMBLE



PUBLISHED FOR THE FOLLOWING ARRANGEMENTS

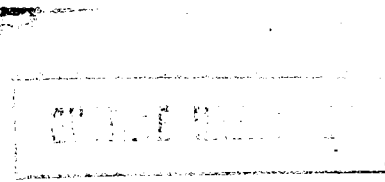
Song, Eb50
Dance Orchestra (Fox Trot or One-Step)75

WHEN PERFORMING THIS COMPOSITION KINDLY GIVE ALL
PROGRAM CREDITS TO

REMICK MUSIC CORPORATION

NEW YORK

PRINTED IN U.S.A.



Winter

Words by
ALFRED BRYAN

Music by
ALBERT GUMBLE

March Allegro

Musical notation for the piano introduction, consisting of two staves (treble and bass clef) in 2/4 time with a key signature of two flats (B-flat and E-flat). The music features a rhythmic pattern of eighth and sixteenth notes.

Musical notation for the piano introduction, continuing from the previous system. It includes a repeat sign and a dynamic marking of *mf* (mezzo-forte).

Win - ter time is freez - ing time, Teas - ing time and squeez - ing time. That's the
Dont be bash - ful, it's no use; Win - ter time's a good ex - cuse. When you

Vocal melody and piano accompaniment for the first line of lyrics. The piano part includes a dynamic marking of *p* (piano).

time to love _____ With your la - dy love you go,
want to spoon _____ Cud - dle close and hold her tight,

Vocal melody and piano accompaniment for the second line of lyrics. The piano part includes a dynamic marking of *p* (piano).

Copyright MCMX by Jerome H. Remick & Co.

Copyright renewed and assigned to Remick Music Corporation

International Copyright Secured.

Made in U. S. A.

ALL RIGHTS RESERVED INCLUDING PUBLIC PERFORMANCE FOR PROFIT
The making of any unauthorized adaptation, arrangement or copy of this publication, or any part thereof, is an infringement of copyright and subjects the infringer to severe penalties under the Copyright Act.

Skim-ming o'er the ice and snow, Sil - ver moon a - bove.
 Make her think it's June to - night, Talk of hon ey moon.

Hear the sleigh bells ring! Hear them ding - a - ling!
 Wed-ding bells will ring Some-time in the Spring.

L.H.

CHORUS

Win - ter, Win - ter, When the snow is soft - ly

p-f

fall - - ing, That's the time to squeeze, when it starts to freeze.



In Oc - to - ber and No - vem - ber and De - cem - ber, just re - mem - ber

Win - ter, Win - ter, When your sweet-heart comes a -

call - ing, By the fire - side so bright you'll sit and tease her,

That's the time to squeeze her, when it's win - - ter. 1. 2. ter.

D.C.